

The Path to Rebuilding Nepal

Proving a Resilient Nepal is Possible Through Community Engagement, Engineering, and Technology



2015

A National Catastrophe, and an Immediate Response

On April 25th, Nepal is hit by a magnitude 7.8 earthquake, killing 8,800 people and damaging or totally destroying 1 million houses. Build Change immediately completes a comprehensive reconnaissance report with recovery recommendations, and sets up an office in Kathmandu.



2016

The Path to Recovery Emerges

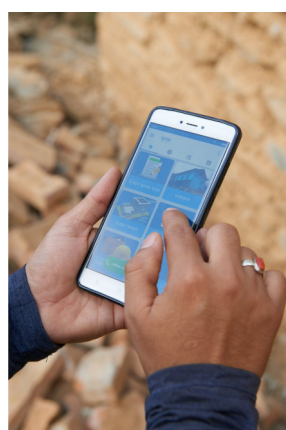
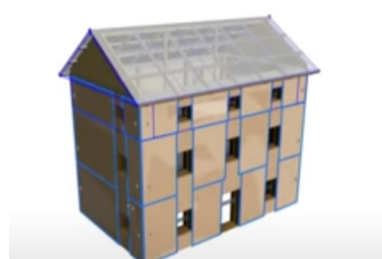
- The first Technical Support Center (TSC) opens. It provides 350 homeowners with free advice, free house designs, and free site supervision support in its first year.
- The first two retrofitted houses are completed.
- Build Change completes a model house to train local construction workers in earthquake-resistant stone masonry.
- Drones are used to conduct aerial remote site assessments.
- Build Change launches a forum theater program to raise awareness in remote communities about disaster resilient house construction.
- Build Change's new construction designs are approved by the government and included in the official catalog of approved designs.



2018

Reaching the Most Vulnerable

- The TSCs grow even further (to 27) and serve 26,000 homeowners.
- Build Change pioneers a 3D automated retrofit design tool so more houses can be evaluated for retrofitting quickly.
- In 2018/2019 Build Change supports homeowner-led reconstruction in all 32 earthquake-affected districts of Nepal.
- Working with partners, Build Change fast-tracks the reconstruction efforts for vulnerable homeowners who have not yet started to rebuild.
- A free design library integrated into the Surakshit Ghar mobile application allows homeowners to pick out house plans themselves.
- Build Change comes in runner-up out of 2,500 entries from 150 countries in the 2018 IBM Call for Code based on our pioneering approach to automated retrofitting. Home retrofitting plans that used to take a team of 3 people 4-5 days to complete now take one person 3 hours. That's 97% faster!



2017

Technology Innovations For Families Even in Remote Areas

- The TSCs expand to 10 communities; more than 3,000 homeowners are served.
- The Surakshit Ghar "Safe House" mobile application is built by Build Change to empower homeowners at every step of the reconstruction process. It is endorsed by the National Reconstruction Authority of Nepal.
- Build Change and its partners build a model house to showcase how to build resilient homes with confined masonry.
- Build Change rolls out mobile construction monitoring and supervision tools.



2019 & 2020

Retrofits and New Construction at Scale

- Through 21 TSCs, 23,000 homeowners receive advice on resilient home-building.
- Working with the government of Nepal and partners, Build Change scales municipal subsidies for retrofitting. Government engineers provide retrofit technical assistance to nearly 100,000 homeowners entitled to a \$1,000 retrofit subsidy.