



**BUILD CHANGE**



# 2016 Annual Report



# Table of Contents



<b>Letter from the CEO.....</b>	<b>5</b>
<b>The Power of Partnership.....</b>	<b>7</b>
<b>Our Staff.....</b>	<b>9</b>
<b>Our Impacts.....</b>	<b>11</b>
<b>Strengthening Houses to Prevent the Next Disaster.....</b>	<b>13</b>
Meet Maria.....	15
<b>Safer Schools.....</b>	<b>17</b>
<b>Growing Entrepreneurial Capacity.....</b>	<b>19</b>
Safer Bricks & Financial Stability.....	21
<b>Rebuilding After Disaster.....</b>	<b>23</b>
<b>Technology, Data, and Social Change.....</b>	<b>25</b>
<b>Partnering for A Safer Future.....</b>	<b>27</b>
Partners.....	29
Donors & Supporters.....	31
<b>Spotlight on Build Change.....</b>	<b>33</b>
<b>Financials.....</b>	<b>35</b>
<b>Board of Directors.....</b>	<b>38</b>
<b>Memoriam.....</b>	<b>39</b>
<b>Partner with Us.....</b>	<b>41</b>



# Letter from the CEO

Dear friends and colleagues,

The best partnerships may be borne out of a common goal, but they thrive when they embrace equality and passionately pursue social change.

Two days before the 7th anniversary of the earthquake in Haiti, I joined the final inspection and handover of the first retrofitted houses in Martissant, a complex, congested neighborhood in Port-au-Prince hit hard by the earthquake, poverty, and crime. The Ministry of Public Works engineer and the representative of the Haiti government housing unit checked the construction to ensure we had met the standards. The Build Change engineer and architect, the homeowner, the builder were all present, celebrating this big step toward building quality enforcement by government officials, toward long-term change.



Our very first partners – Echoing Green, Mercy Corps, and the Draper Richards Kaplan Foundation – gave me the confidence to start Build Change and the opportunity to launch our first program in Aceh, Indonesia after the tsunami.

Government partnerships are essential for preventing houses and schools from collapsing in the next earthquake. We thank our government counterparts in Haiti, Guatemala, Colombia, Indonesia, Nepal and the Philippines for their expanding enthusiasm for prioritizing this issue.

Autodesk Foundation, Hilti Foundation, RMS, Caterpillar Foundation, ANA and Lenovo have generated triple wins that benefit all partners – Build Change, the corporate partner, and our clients.

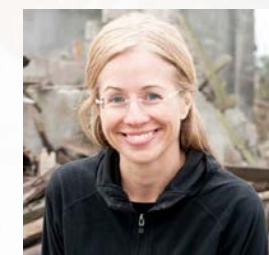
We're so grateful to the Tech Awards, Ashoka, the Schwab Foundation, and the Clinton Global Initiative for believing in the power of partnerships, and that social entrepreneurship can lead to better outcomes after disasters.

And now, we are thrilled to be welcomed into the Skoll community with a 2017 Skoll Award for Social Entrepreneurship.

Can one organization change the world?

Yes, but they need a lot of help from their friends. So thanks to the NGOs, governments, funders, supporters of social entrepreneurship, corporate partners, builders, schoolteachers, brickmakers and homeowners we've had the privilege and joy of partnering with for a safer future.

With best wishes for a safe and partnership-filled 2017,



*Elizabeth Hausler*  
Dr. Elizabeth Hausler  
Founder & CEO





# The Power of Partnership

## Millions of houses and schools around the world are vulnerable in disasters.

There are many factors contributing to this issue, ranging from a lack of training for builders and engineers, to poor quality building materials or lack of financing for safe construction projects. The challenges are complex, so it is necessary to include multiple perspectives and approaches from all sectors of society and the economy to address them.

Together with private sector businesses, foundations, governments, NGOs, entrepreneurs, and homeowners,

we have shaped our programs to address the unique barriers to safe construction. These relationships have contributed local insight, international expertise, financial incentives, political will, and the ability to generate innovative solutions to change construction practice permanently.

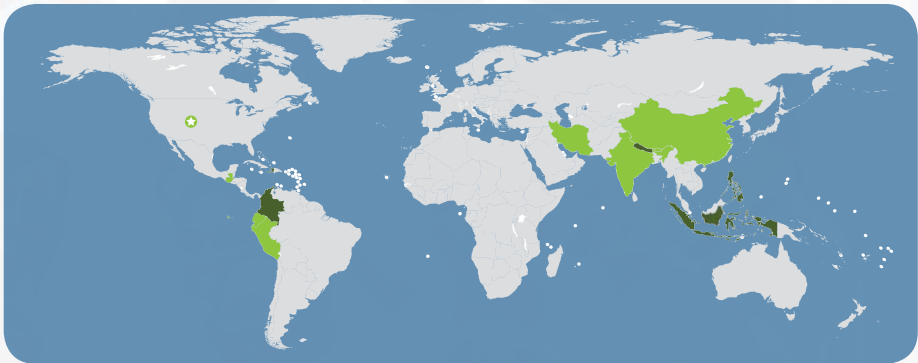
**We are proud to dedicate this year's annual report to all of our partners who have inspired, supported, and driven us to great heights over the past 12 years.**



# Our Staff



## 2016 STAFF



Nepal  
**61**

Haiti  
**54**

Indonesia  
**13**

Headquarters  
**9**

Philippines  
**7**

Latin America  
**6**

Total Staff  
**150**

### All Staff

Women	Men
<b>43%</b>	<b>57%</b>
Technical	Non-Technical
<b>66%</b>	<b>34%</b>

### Senior Management

Women	Men
<b>50%</b>	<b>50%</b>

### All Managers

Women	Men
<b>51%</b>	<b>49%</b>



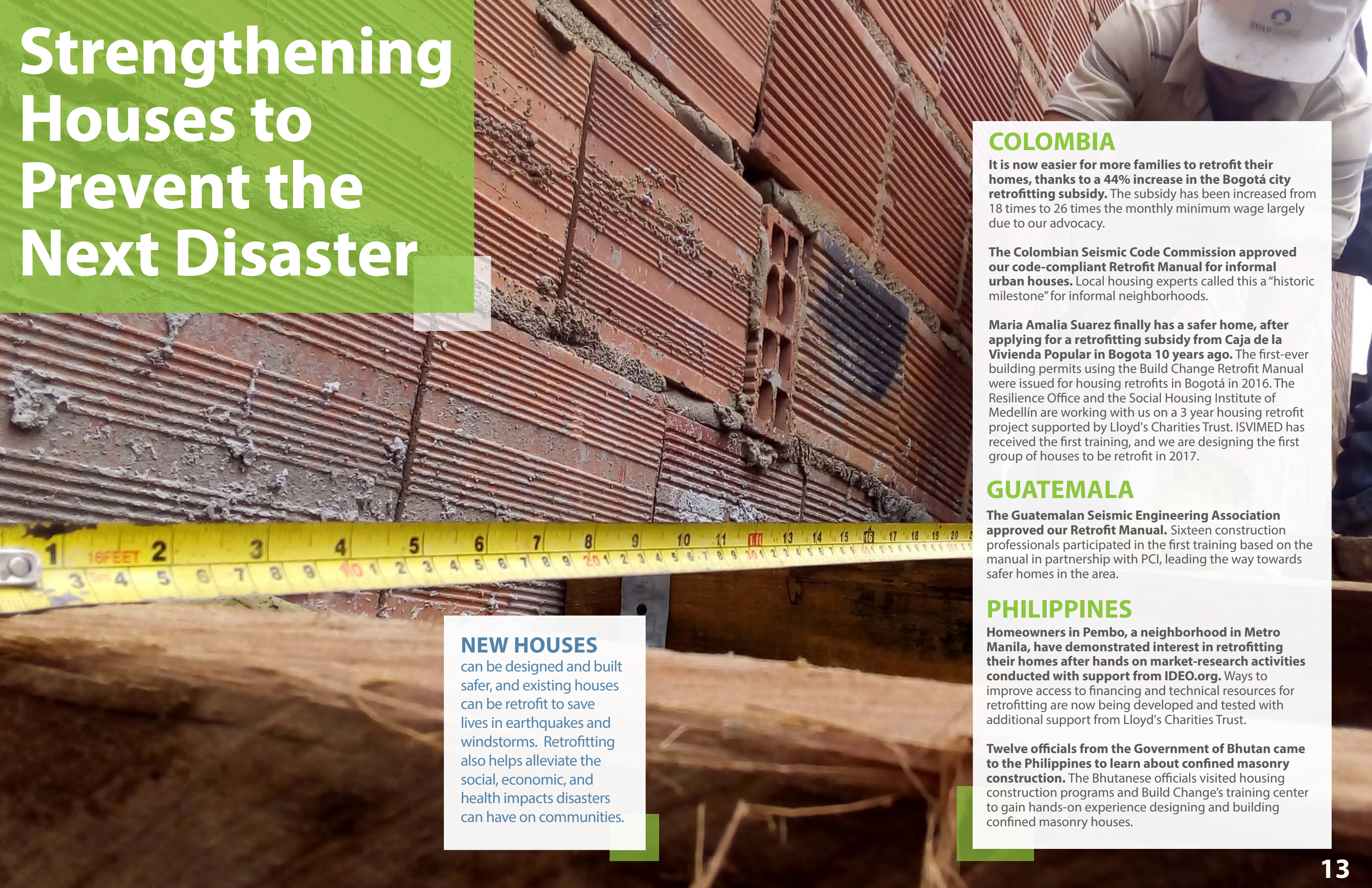
# Our Impacts



					
	Safer Buildings	Safer People	Jobs Created	People Trained	Orgs Changed
2016	1,108	12,305	225	2,271	10
2004-2016	51,296	257,621	12,303	27,857	42



# Strengthening Houses to Prevent the Next Disaster



## NEW HOUSES

can be designed and built safer, and existing houses can be retrofit to save lives in earthquakes and windstorms. Retrofitting also helps alleviate the social, economic, and health impacts disasters can have on communities.

## COLOMBIA

**It is now easier for more families to retrofit their homes, thanks to a 44% increase in the Bogotá city retrofitting subsidy.** The subsidy has been increased from 18 times to 26 times the monthly minimum wage largely due to our advocacy.

**The Colombian Seismic Code Commission approved our code-compliant Retrofit Manual for informal urban houses.** Local housing experts called this a “historic milestone” for informal neighborhoods.

**Maria Amalia Suarez finally has a safer home, after applying for a retrofitting subsidy from Caja de la Vivienda Popular in Bogota 10 years ago.** The first-ever building permits using the Build Change Retrofit Manual were issued for housing retrofits in Bogotá in 2016. The Resilience Office and the Social Housing Institute of Medellín are working with us on a 3 year housing retrofit project supported by Lloyd's Charities Trust. ISVIMED has received the first training, and we are designing the first group of houses to be retrofit in 2017.

## GUATEMALA

**The Guatemalan Seismic Engineering Association approved our Retrofit Manual.** Sixteen construction professionals participated in the first training based on the manual in partnership with PCI, leading the way towards safer homes in the area.

## PHILIPPINES

**Homeowners in Pembo, a neighborhood in Metro Manila, have demonstrated interest in retrofitting their homes after hands on market-research activities conducted with support from IDEO.org.** Ways to improve access to financing and technical resources for retrofitting are now being developed and tested with additional support from Lloyd's Charities Trust.

**Twelve officials from the Government of Bhutan came to the Philippines to learn about confined masonry construction.** The Bhutanese officials visited housing construction programs and Build Change's training center to gain hands-on experience designing and building confined masonry houses.





# Meet Maria

## On August 3, Maria Amalia

Suarez’s house in Bogotá became the first retrofit in Colombia to break ground under supervision of Build Change, as a part of our partnership with city authorities.

Maria has three generations, a total of seven people, living in her single story, three-room home. She lives in a part of Bogotá which used to be controlled by one of the illegal armed groups, who extorted her multiple times to “pay rent” on the land that she already owned.

When going over the retrofit designs with Build Change engineers, Maria pointed out that the rear of her house where her kitchen and bathroom are located had no exterior walls to separate her from her neighbors who live behind her. The designs were updated to include these walls.

This project has been a long time coming. Maria applied for a home improvement subsidy from Caja de la Vivienda Popular (CVP) 10 years ago, and Build Change is proud to support them both in making Maria’s house safer.

In Colombia we have been focused on building resilience of cities before the next disaster- a first for the organization. Preventing building collapse before a disaster has the potential for an even greater impact than post-disaster reconstruction through avoiding death, injury, and destruction in the first place.



# Safer Schools

**ACCORDING TO THE WORLD BANK,** approximately 875 million children around the world attend school in regions that are particularly vulnerable to earthquakes. Safe schools have the potential to save millions of lives and protect our children's futures.

## INDONESIA

**Retrofitting is underway at the first school building in Padang.** Local government, school committees, and the community are working with us to retrofit one school building in Padang with support from Thornton Tomasetti Foundation and the New Zealand Embassy.

## HAITI

**Students in two schools in Port-au-Prince are now learning in safer buildings, thanks to the parents and school officials on the school committee who oversaw the improvements.** A result of partnerships between local school committees, the American Red Cross, Global Communities, and Build Change, these schools provide a safe learning environment for hundreds of students each year.

## NEPAL

**In Sindhupalchok district, 25 students are now learning in a newly retrofitted school building with support from ENECO. This project paved the way for future schools. Twenty schools, a total of 60 buildings, in the Lalitpur district have been evaluated for vulnerability to earthquakes, and now have specific retrofitting recommendations to make them more resilient.** Rato Bengala Foundation commissioned seismic vulnerability assessments of the schools, and our team was able to propose specific retrofitting requirements for each of them.

## PHILIPPINES

**7,245 children are learning in safer classrooms across Cebu province thanks to a partnership with Caritas Switzerland and the Ramon Aboitiz Foundation, Inc (RAFI).** RAFI is using a safer classroom design and training communities to engage in monitoring classroom construction.



# Growing Entrepreneurial Capacity

**DUE TO RAPID URBANIZATION,** the construction sectors of Latin American and Asian nations are among the biggest contributors to job creation. Working with local small- and medium-sized enterprises (SMEs) and construction professionals stimulates a community's economy, and provides a path forward for the sustainability of safe construction in the future.

## HAITI

**Builders in the north of Haiti now have access to competency-based skills training.** Alongside USAID, CECI, Global Communities, and other local partners, we opened the first safe construction training center in the North department, which is a growing economic region of the country.

## INDONESIA

**Through the Bata Jaya Cooperative, local small businesses (SMEs) have sold over 1 million good-quality bricks.** In total, over 8.2 million good quality bricks have been produced by trained SMEs in the area. Good bricks make construction safer across disaster-prone West Sumatra, and leveraging quality through a cooperative allows small brickmaking businesses to reach more customers and free themselves from moneylenders.

## PHILIPPINES

**370 new students used the training center and curriculum at Eastern Samar State University (ESSU) in 2016.** The center opened in 2015 in partnership with the Technical Education and Skills Development Authority (TESDA), and has since trained 582 construction professionals in safe building techniques.





# Safer Bricks & Financial Stability

## Syaiful Ardi has been

working as a brickmaker for 25 years, following in his father's footsteps. Throughout this time, Syaiful worked hard to make sure he was producing a quality product. However, when he met Build Change, his understanding of quality changed. When his bricks were tested for the first time, they did not meet the standards for good quality bricks.

**"I didn't think it was difficult to produce good quality bricks, as long as we are diligent and serious about our work. I thought I was aware of the quality of my product."**

Through working with the Bata Jaya Cooperative, a brickmaking cooperative created by Build Change in Padang, Lubuk Alung, Sumatera Barat, Indonesia, Syaiful was able to improve his methods. Now, Syaiful is consistently producing good quality bricks, and is able to sell them to the cooperative. In exchange, the cooperative helps Syaiful save some of his profits, and register and pay for health insurance for him and his family.

With his savings, Syaiful has new plans. **"When I have enough saved, I want to build a new kiln to expand my business,"** he says. **"For now, I will keep producing good quality bricks to keep my family protected."**



# Rebuilding After Disaster

## AFTER DISASTER

strikes, safe reconstruction techniques, infrastructure financing, and homeowner demand for strong houses are crucial factors in preventing losses in future disasters.

## HAITI

**Hurricane Matthew made landfall in Haiti on October 26, 2016.** With support from RMS, Build Change engineers assessed the storm's impact on the built environment as well as the ability of local builders and blockmakers to respond to reconstruction needs. No houses built with Build Change technical assistance were damaged. In 2017, a training program will be launched in the South Department, which was most severely impacted by the storm.

**LAMIKA, a holistic American Red Cross-funded program that included strengthening homes and upgrading sanitation and water access, was completed in Campeche and other neighborhoods near Port-au-Prince.** By the end of the project 522 families are now living in 185 safer houses, and 472 students are learning in 2 safer schools.

**The Haitian Government's Unit for the Construction of Housing and Public Buildings (UCLBP) continues to support the AREMA Center for Reconstruction Assistance in Martissant alongside our team.** In 2016 engineers evaluated 44 houses or plots in this Port-au-Prince neighborhood, and designed 43 retrofits or new buildings while training 20 builders and 24 homeowners in safe construction practices throughout the process. By the end of the project in August 2017 there will be a total of 233 housing units providing safer housing for 235 families.

## NEPAL

**The Government of Nepal has increased the number of disaster-resistant technical resources available specifically focused on how to address the issues that led to severe damage during the 2015 earthquake.** Homeowners, school officials, and government agencies now have access to retrofit designs for mud-and-stone houses, and construction designs for lightweight school buildings and confined masonry houses.

**Community theatre is a long standing tradition in Nepal.** Together with a local theatre partner, we have developed a new theatre piece about the 10 key messages of earthquake-resistant construction. Over 32,000 people have seen the humorous, educational, and entertaining story about simple ways of building a stronger home.

**To date, 569 builders have been trained in safe construction, including on-the-job training in new construction and retrofitting techniques.**

## PHILIPPINES

**Thirty-one families are now living in safer homes outside the storm surge zone, thanks to a partnership between Give2Asia, the Guiuan Development Foundation, Inc, and Build Change.** Homeowners and local builders benefitted from technical assistance and training to build safer homes.





# Technology, Data, and Social Change

**WITH HELP FROM**  
our partners around the  
world, we are leveraging  
technology to make  
safer houses and schools  
attainable for everyone.

## RECONSTRUCTION SUPPORT IN THE HANDS OF THOUSANDS

**Surakshit Ghar means “Safe House” in Nepali, and is also the name of the Build Change app now in use in Nepal.** Homeowners, builders, and others involved in reconstruction now have access to key information in the palm of their hand, and can directly contact our team of technical experts for advice. We hope to extend access to the technology to a wider audience through other organizations working in post-disaster reconstruction in Nepal.

## AERIAL MAPPING FOR SAFE RECONSTRUCTION

**Drones are becoming an important part of post-disaster work, and we are now analyzing how to use them to guide safe construction and inform planning of our programs.** With the approval of the Civil Aviation Authority and the Ministry of Home Affairs in Nepal, the use of drones has allowed our team to survey buildings and potential construction sites from the air. With support from Autodesk, we are now using the collected aerial images to support homeowners in building back safer, more efficiently.

## LEVERAGING MOBILE TECHNOLOGY

**Fulcrum has worked with us to adapt its data-collection application to enable construction-site monitoring and supervision services through mobile technology at Build Change sites in Haiti and Nepal.** In Nepal alone, more than 2,000 homeowners are followed by this system, which gives them access to professional advice and an extra layer of supervision. In Haiti, the safe completion of more than 200 structures has been monitored over the past two years.

## WORLD-CLASS DESIGN TOOLS

**Autodesk sent a representative to Haiti to train our staff in Revit, deepening our technical capacities so that we can design buildings more efficiently.** Now, more homeowners and students will benefit from our ability to leverage this powerful software to design safe houses and schools tailored to their needs.



# Partnering for A Safer Future

## Autodesk Foundation

Autodesk Foundation has contributed donations of software, technical support, employee volunteer time, student expert interns, and funding to all of our active program locations. Their support drives some of our most innovative projects, including using drones to guide safe reconstruction in Nepal and integrating advanced engineering software into our design work in Haiti.

**“We’ve been proud to support Build Change over the past few years and have been impressed by their advanced use of our design technology to improve disaster-resistant design and construction for high-risk areas. Their work is greatly improving post-disaster reconstruction standards and saving lives.”**

-Joe Speicher  
Executive Director, Autodesk Foundation

## RMS

RMS has contributed to Disaster Risk Reduction in 6 countries over the past 5 years of our partnership. RMS takes our partnership to the field, sending a team of staff and clients to one of our in-country programs annually.

**“Build Change has made unprecedented progress over the past 10 years in reducing future earthquake casualties in developing countries. By investing in Build Change, RMS is helping to minimize loss and risk in communities with the least resources to cope with disasters.”**

- Hemant Shah,  
Co-founder & Chief Executive Officer, RMS



## Ricardo Ramirez

Ricardo Ramirez is a Colombian architect who specializes in the development of housing improvement programs. He has worked for more than 30 years in the development of public policies and has developed housing improvement projects throughout Colombia.

**“Build Change has achieved a historic social and technical innovation through the approval of the manual for retrofitting informal housing, and beginning to implement retrofits in Bogota alongside city authorities. The most important seismic engineering authority in the country has approved this methodology, which allows homeowners to continue to drive the construction of their homes while improving the seismic performance of existing houses.”**

- Ricardo Ramirez



# Partners

## Global Platform Partners \$100,000+ for 3 years



## Changemakers \$100k+

## Retrofitters \$50k - \$99,999



## Builders \$25k - \$49,999



## Brickmakers \$10k - \$24,999



## Additional Partners

Agora Charitable Fund • AmazonSmile Foundation • ARSOW • Ball Corporation • Bonaparte Charitable Fund • Copper Kettle Brewing Company • Carrington Risk Consulting • City Center Realty Partners LLC • Colorado School of Mines • Curry Stone Foundation • Duval & Stachenfeld LLP • HELP • Hutton Family Foundation • Jagged Mountain Craft Brewery, LLC • McElwee Charitable Account • Pohlad Family Foundation • Rato Bengala Foundation • Sorrel Fisher Trust • Steven Gomberg Family Fund • Zoback Family Charitable Fund

## Gifts in Kind

AllHaitiPinless • ANA • Cisco Webex • Jennifer Pazdon • Lagunitas Brewery • Lenovo • Katie Pitts • Sigurd Anderson • Techsoup



# Donors & Supporters



Chanapol Akkarawichcha  
Ali Akl  
Meshal Alshammari  
Anonymous  
Sandra Bagnatori  
Fiona Bannert  
Alexis Barber  
Douglas & Annette Barndt  
Sara Bebars  
Barry & Andreatta  
Nichole Bell  
Laurie Bennett  
Robert Bentley  
Prescott Bishop  
Mark Bohm  
Janet Boley  
Sunita Bose  
Thomas Bridge  
Uta Brookes  
Sean Callan  
Brian & Linda Cambra  
Darlene Charneco  
Shuyuan Chen  
Beth Churchill  
Rosemary Clark  
Elizabeth Couchman  
Renata Cummins  
Matthew d'Alessio  
Jacelyn Del Prado  
Jeffrey Dobrinsky  
George Dyke  
Craig & Molly Ehrlich  
Michael Faber  
Randi Feldman  
Camilla & Matt Field  
Rick Fontaine  
Patricia Foster  
Caroline Fox  
Maria Frontoso  
Suzie Garas  
David, Finn, &  
Shannon Gilbert  
Matt Glickman  
Karineh Gregorian

Helen Griffith  
Rachel Gumey  
Bonnie & Don Hausler  
Elizabeth Hausler  
Preston Henne  
Lauren Hinton  
Susan Hirsch  
Anton Honikman  
& Jessica Lindl  
Craig Huey  
Geoffrey Jones  
Gary Just  
Rashad Kaldany  
Daniel Kamenetz  
Dinesh Katariya  
Rohit Kaushik  
Luke Kennedy  
Thomas Kim  
Terrence Kingston  
Aaron Koegel  
Douglas Koshland  
Phlyp Koshland  
Svetlana Kostukovsky  
Bruce L. Kutter  
Rebecca Laberrenne  
Anthony LaGreca  
Philip LeGrone  
Deirdre Lizio  
Richard Long  
Tim Louis  
Jacob & Chesley  
Lowenstern  
Andrew MacGregor  
Kristin & David  
Macknight  
Todd Marinchak  
Adrian Mark  
Joe Melly  
Robert Merkel  
Trena Moya  
Kana Muraki  
& Larry Miao  
Mary Pat Murphy  
Arun Nair

Thom Neff  
Kara Nelson  
Matthew Nielsen  
Ralph & Katharine Nixon  
Alastair Norris  
Robert Nothstein  
Nader Pakfar  
David Poe  
Scott & Kathleen Pollock  
Steven & Anne Puricelli  
Richard Quittmeyer  
Katherine & James  
Rothschild  
Marisa Ruscitto  
Gina Russoniello  
Robert & Judith Sassetti  
Jeffrey & Trey Schlarb  
Andrew & Catarina Schwab  
Kandasamy Sethuraman  
Dan Shapiro  
Nicholas Sitar  
Maja & Adam Smith  
Joe Soboleski  
Elizabeth Soh  
Daniel Stevens  
Karen & Thomas Still  
Cody Stumpo  
David Swartz  
Bryce Tanner  
Reynolds Taylor  
Christopher Thomas  
Thomas & Sheila Tsai  
Noll Tufani  
Paul & Jennifer  
VanderMarck  
Lisa Wang  
Jeff Waters  
Olivia White &  
Martin Fisher  
Holly Widen  
Jack Woodruff  
Roger & Ruth Wu  
Andrea & Mark Zola

Thank you to our supporters who believed in us from the very beginning. These organizations gave us our start, and showed us the power of partnerships.



## Echoing Green

The global social venture fund Echoing Green named Elizabeth Hausler among the world's "Best Emerging Social Entrepreneurs" and awarded her the Echoing Green Fellowship in 2004, giving Build Change a powerful platform to start on.



## Ashoka

Ashoka is a global community of social entrepreneurs who deliver innovative solutions to social problems, which is why we are so proud that they named Elizabeth Hausler to the Ashoka-Lemelson Fellowship in 2009.



## The Draper Richards Kaplan Foundation

The Draper Richards Kaplan Foundation awarded Elizabeth Hausler and Build Change 3 years of funding and business assistance in 2006, allowing Build Change to build a strong foundation for the next decade of projects (and beyond!).



## The Schwab Foundation for Social Entrepreneurship

The Schwab Foundation for Social Entrepreneurship named Elizabeth Hausler a US Social Entrepreneur of the Year in 2011, giving Build Change access to a network of leading social entrepreneurs from more than 40 countries.



# Spotlight on Build Change

Take a look at where our staff, programs, and partners were featured in articles and lectures around the world this year.

**January 11 - The Huffington Post**

["5 Powerful Ideas for Global Impact from Social Entrepreneurs"](#)

**February 1 - Civil & Structural Engineer Magazine**

["Build Change: Worldwide Technical Excellence in Search of Local Solutions"](#)

**March 8 - Eco-Business**

["Why Women are the Architects of Our Sustainable Future"](#)

**March 16 - EERI Friedman Family Visiting Professionals Program, University of Notre Dame**

Lecture by Elizabeth Hausler.

**April 6 - CSR Asia**

["The rural resilience challenge – poor construction quality a key factor behind high casualties"](#)

**April 9 - Engineers for a Sustainable World Conference, UC Berkeley**

Lizzie Blaisdell presented "Sustainability in Disaster-Resistant Housing".

**April 21- World Vision Nepal**

["Harnessing Theater to Build Change"](#)

**May 3 & 4 - ULEAM in Manta & Paraninfo Universidad Tecnico, Portoviejo, Ecuador**

Lizzie Blaisdell, Juan Caballero, and Walter Cano presented "Experiences with housing reconstruction: Lessons from other earthquakes".

**June 2 - Andean Parliament**

Juan Caballero spoke on prevention and risk in the Andean region.

**June 6 - El Espectador (Bogotá, Colombia)**

["Por un hábitat seguro"](#) (For a Safe Habitat)

**June 21- Solidsmack**

["Think | REVOLUTION: How Build Change is Rebuilding Communities"](#) featured our partnership with Lenovo and their ThinkRevolution program.

**June 25 - Impact Journalism Day**

Sparknews coordinated with 55 newspapers from around the world to publish articles on Philippines was featured in 8 newspapers:

[Les echos du Nord – Gabon \(French\)](#)

[L'Actu / Mon Quotidien – France \(French\)](#)

[La Tribune de Genève – Switzerland \(French\)](#)

[El Heraldo – Honduras \(French\)](#)

[The Straits Times – Singapore \(English\)](#)

[Le Soir – Belgium \(French\)](#)

[The Philippine Star – The Philippines \(English\)](#)

[L'Express de Madagascar – Madagascar \(French\)](#)

**July 27 – 100 Resilient Cities, Medellín**

Elizabeth Hausler and Juan Caballero participated in sessions for Medellín - Antioquia to become part of 100 Resilient Cities, working on a risk management project alongside the Rockefeller Foundation and ELADES.

**September 21-23 – CGI Annual Meeting, New York City**

Build Change was featured in the Opening Plenary Session, and Elizabeth Hausler participated in the session "What We Know Now: Applying Lessons Learned to Advance Haiti's Future".

**September 22 – Singgalang (Padang, Indonesia)**

["DPRD Dukung Penggunaan Bata Sesuai Standar Nasional"](#) (Parliament Supports Use of Bata National Standards Compliance)

**October 12 – Chevron Lecture Series at Colorado School of Mines, Golden, CO**

Elizabeth Hausler presented as a part of Colorado School of Mines Society of Women Engineers.

**November 2, 2016 - Fast Company**

["How Cities' Most Underserved Neighborhoods are Making Themselves More Resilient"](#)

**November 10, 2016 - See Change Magazine**

["Building Resilience Against Natural Disasters: Build Change takes technology to the next level"](#)

**November 14-17, 2016 – Autodesk University, Las Vegas, NV**

Uttam Pudasaini spoke on the Impact Summit Panel on drone mapping for safer reconstruction in Nepal.





# Financials

## Statement of Activity

(Unaudited)

### REVENUE AND SUPPORT

Grants and Contributions	\$5,948,002
Contract Income	\$28,322
Interest Income	\$255
Awards & Honorariums	\$2,000
<b>Total Revenues and Support</b>	<b>\$5,978,579</b>

### EXPENSES

#### PROGRAM SERVICES:

Indonesia	\$221,003
Innovations	\$125,365
Latin America	\$293,755
Philippines	\$268,463
Nepal	\$1,136,242
Haiti	\$2,329,270
<b>Total Program Services</b>	<b>\$4,374,098</b>

#### MANAGEMENT & GENERAL SERVICES:

Fundraising	\$659,870
General and Administrative	\$476,387
<b>Total Management &amp; General</b>	<b>\$1,136,257</b>

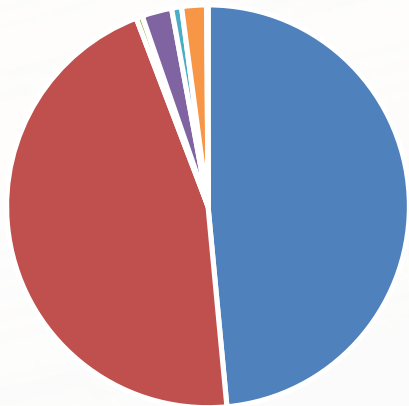
**Total Expenses** **\$5,510,355**

Increase in Net Assets \$468,224

Net Assets - Beginning of Year \$1,346,658

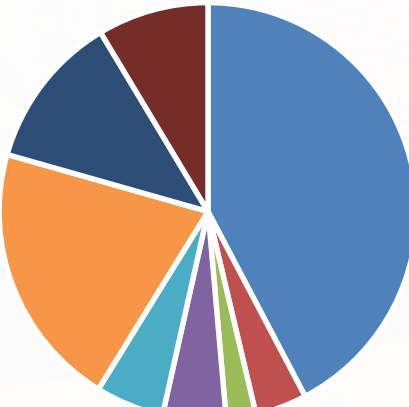
**Net Assets - End of Year** **\$1,814,882**

### REVENUE AND SUPPORT



NGO Grants	48.5%
Foundation Grants	45.7%
Corporations	2.4%
Individuals	2.0%
Gifts In Kind	0.8%
Contracts	0.5%
Honorariums	0.1%
Interest	0.0%

### EXPENSES



Haiti	42.3%
Nepal	20.6%
Fundraising	12.0%
General & Admin	8.6%
Latin America	5.3%
Philippines	4.9%
Indonesia	4.0%
Technical Consulting	2.3%





## Statement Of Financial Position

(Unaudited)

### CURRENT ASSETS

Cash	\$90,565
Accounts Receivable	\$525,545
Contributions and Grants Receivable - Short-term	\$850,000
Prepaid Expenses	\$37,050
<b>Total Current Assets</b>	<b>\$1,503,160</b>

### PROPERTY AND EQUIPMENT

Equipment and Furniture	\$399,771
Less: Accumulated Depreciation	-\$381,433
<b>Total Property and Equipment</b>	<b>\$18,338</b>

### OTHER LONG-TERM ASSETS

Donations and Grants Receivable - Long-term	\$644,401
Deposits	\$20,250
Total Other Long-Term Assets	\$664,651
<b>TOTAL ASSETS</b>	<b>\$2,186,150</b>

### CURRENT LIABILITIES

Accounts Payable	\$111,895
Due to Related Party	\$10,000
Credit Cards Payable	\$70,037
Accrued Liabilities	\$179,335
Deferred Revenue	-
<b>Total Current Liabilities</b>	<b>\$371,267</b>

### NET ASSETS

Unrestricted	\$601,183
Temporarily Restricted	\$1,164,594
Board-Restricted Reserve Fund	\$49,106
<b>Total Net Assets</b>	<b>\$1,814,883</b>

### TOTAL LIABILITIES AND NET ASSETS

\$2,186,150



# Board of Directors



**Sig**  
Anderson



**Martin**  
Fisher



**David**  
Friedman



**Grace**  
Hanson



**Elizabeth**  
Hausler



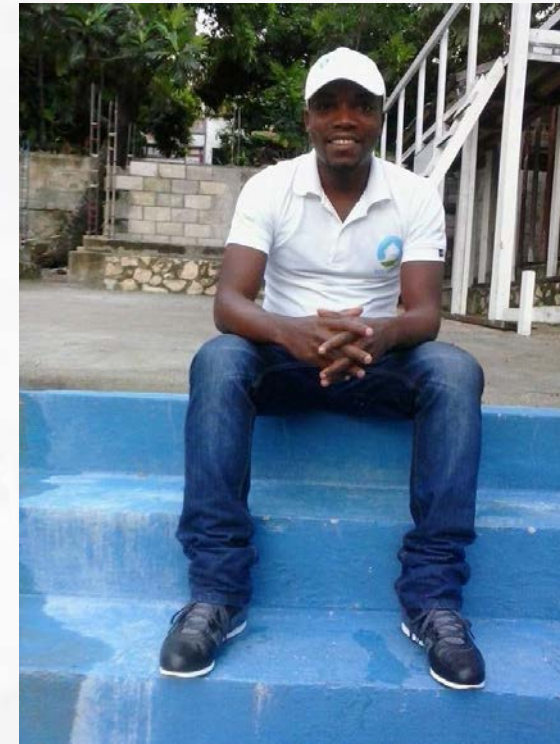
**Paul**  
VanderMarck



**Mary Lou**  
Zoback

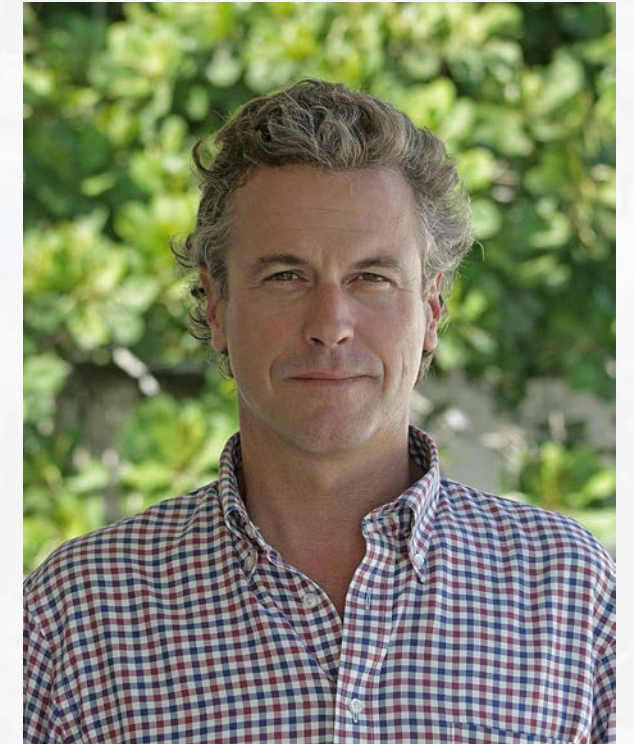
## Memoriam

*Two members of the Build Change family passed away in 2016. Their contributions to communities around the world will never be forgotten.*



**Ricot E.  
Dutreuil**  
**1982 - 2016**

Ricot started with Build Change in Haiti as a groundskeeper in 2011, and climbed through the ranks quickly, to the position of Logistics Assistant. His kindness, intelligence, and personality made him a huge part of our team. He will be missed.



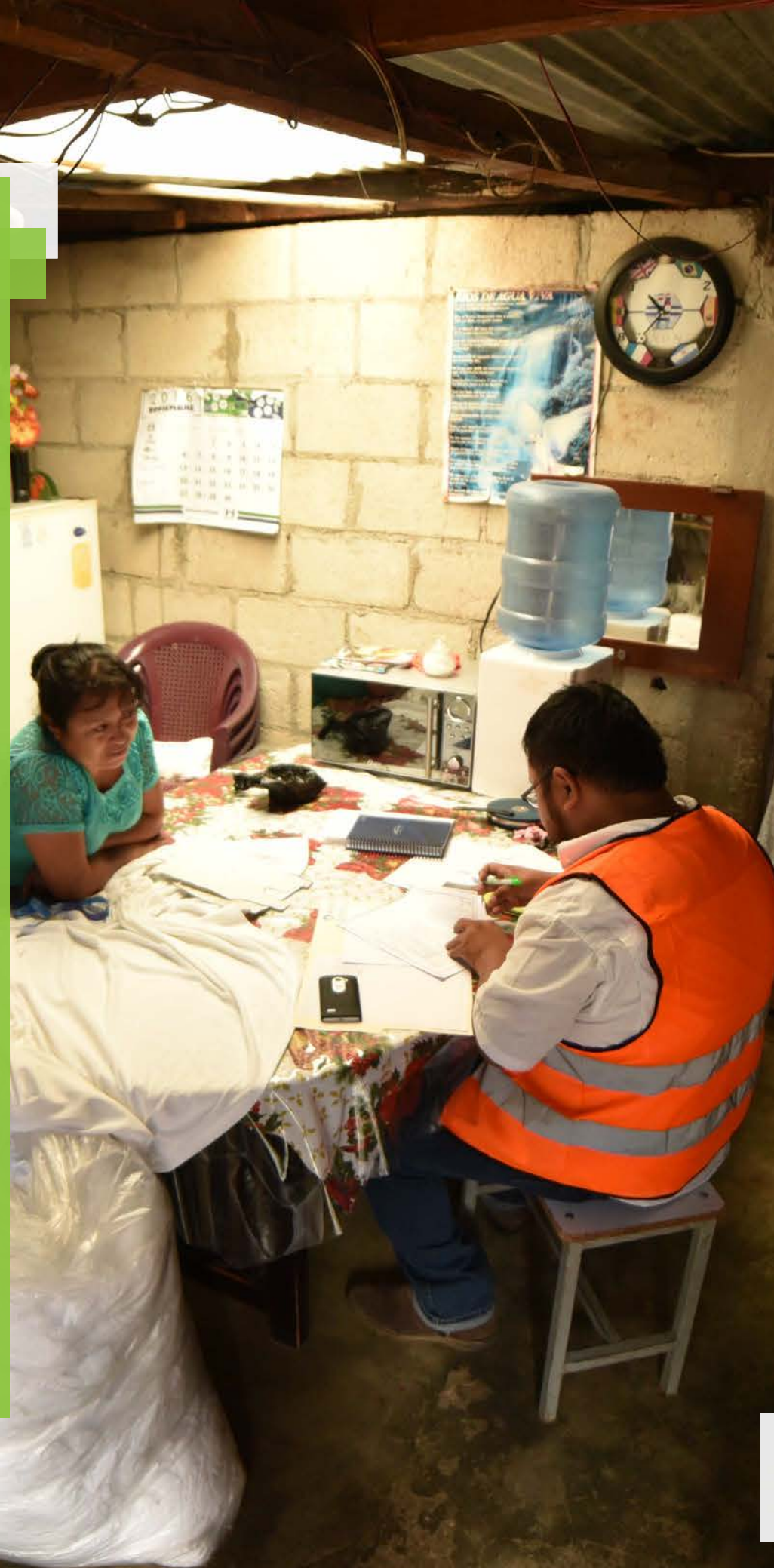
**Gordon  
Goodell**  
**1967 - 2016**

Gordon was hired as the Structural Engineering Team Leader in Haiti in 2011, working his way to Chief Operations Officer by 2014. His dedication spurred growth in Build Change and those around him. He will be remembered fondly.



**People everywhere** rely on their homes and schools to protect them from the elements. When buildings succumb to earthquakes and windstorms, the damage is not just physical and economic - we lose our sense of security as well.

**You can reduce the impact disasters have on people around the world, so that families can sleep at night knowing they are safe in their homes.**



Become a partner today.

**Donate**



Follow @BuildChange

**Sign Up**





**BUILD CHANGE**

**Build Change** saves lives in earthquakes and windstorms by working with people in emerging nations to build homes and schools that will protect their families and children.



 [facebook.com/BuildChange](https://facebook.com/BuildChange)

 [@BuildChange](https://twitter.com/BuildChange)

[www.buildchange.org](http://www.buildchange.org)

**International Headquarters**

535 16<sup>th</sup> Street, Suite 605

Denver, CO 80202 USA

[info@buildchange.org](mailto:info@buildchange.org)

+1 303-953-2563

**Global Operations**

- Colombia
- Guatemala
- Haiti
- Indonesia
- Nepal
- Philippines